

Divert to What ?

Using the Eliminate the Wait Toolkit to Create Diversion Options

Brick-and-Mortar Buildings are NOT always needed for Diversion.

Your County has Options.

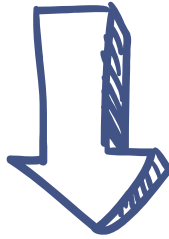
To use the ETW Toolkit, it helps to think about how there are different strategies for different people. Some people with mental illness or IDD are not dangerous and do not need to be detained in a locked facility. Other people may initially need to be in a locked facility but are able to stabilize. And there are others who will need the most restrictive placements, but there are ETW steps to help with this group as well. By considering people individually, you can choose individualized strategies, and create the best outcomes for those with a mental illness while saving your county money.

Start with the person with mental illness or IDD.
What is the least-restrictive, appropriate setting?



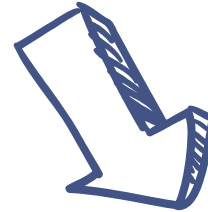
1. Some people do not need a locked facility.

Consider steps in ETW such as release with bond conditions and a treatment plan in place, or Outpatient Competency Restoration (OCR).



2. Others may initially need a locked facility but might be able to stabilize in custody.

Consider ETW strategies such as court-ordered medications, Jail-Based Competency Restoration (JBCR), or JBCR combined with OCR as a step-down program.

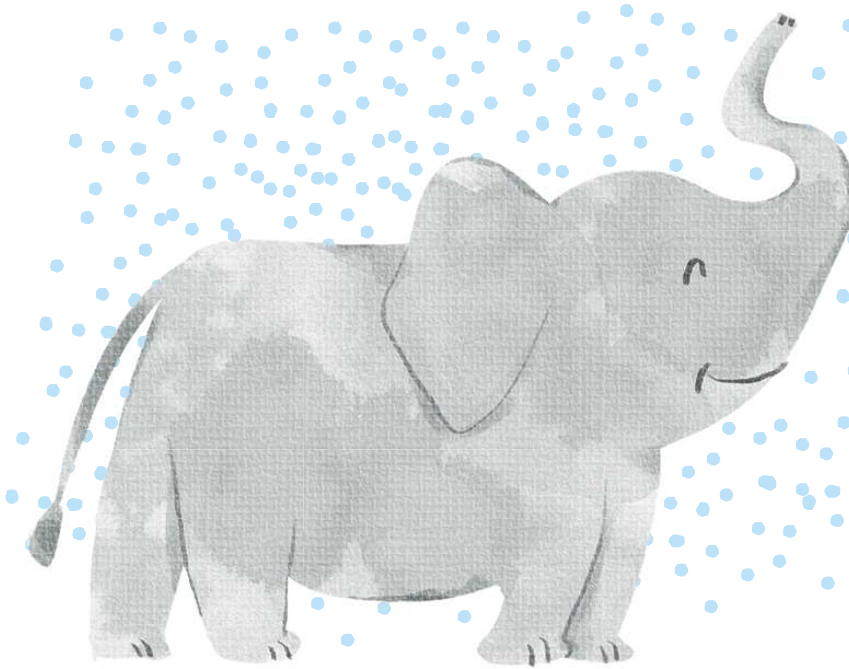


3. Some people will need a locked facility throughout their case.

For those who need the most restrictive settings such as the state hospital, consider ETW strategies such as internal policies for efficiencies and cost savings.

There's an elephant in the room.

Creating new resources for diversion is daunting,
but you can take *one bite at a time*.



*"There is only
one way to eat
an elephant: one
bite at a time."*

Desmond Tutu

Bring together the behavioral health providers, judiciary, law enforcement, sheriffs, jail staff, prosecutors, and defense attorneys.

Improve your processes by using the Eliminate the Wait Toolkit to increase efficiencies.

Track your county's progress and savings and take this to your County Commissioners.

Expand the diversion options in your county such as investing in a drop off center.

**Do the
math!**

For example...

$$5 \times 180 \times \$225 = \$202,500$$

people restored using strategies 1&2 days spent in jail per individual to house 1 person for one day saved